

# PRIMA



Advanced Materials Moving Forward

PSO-V2B Guide  
General Call for Projects  
Collaborative Innovation  
in Advanced Materials

– Round R30 –

FEBRUARY 2025

**Table of contents**

1. Objectives.....	3
2. Eligibility of projects.....	3
3. Recommended Themes.....	4
4. Cross-cutting theme – Circular Economy.....	5
5. Participants.....	5
6. Financing Program Standards .....	9
7. Financing Program Standards .....	11
8. Various.....	14
9. Procedure and Timetable.....	15
10. Evaluation Criteria.....	16
11. Project Application Form .....	18
12. Contacts .....	22
APPENDIX A: HYDRO-QUÉBEC .....	23
APPENDIX B: DEFINITION OF DIFFERENT TECHNOLOGY READINESS LEVELS (TRL) .....	24
APPENDIX C: CIRCULAR ECONOMY.....	25

## Call for Research and Innovation Projects in the Field of Advanced Materials – R30

**Deadline for letter of intent: April 25, 2025, at noon**  
**Application deadline: May 26, 2025, at noon**

### 1. Objectives

- a. PRIMA Québec, le Pôle de recherche et d'innovation en matériaux avancés, animates and supports the ecosystem of advanced materials by favouring collaborative innovation for the economic development of Québec. PRIMA is the privileged catalyst between industrial and research circles.
- b. This call for projects seeks to support innovation in the field of advanced materials by funding **collaborative research projects** designed to accelerate the development of advanced materials as a practical response to some of Québec's major industrial challenges. It has been developed to help establish collaborations between industry and the research sector (universities, CCTT or public research centres<sup>1</sup>).
- c. Strengthen the capacity for technological innovation of companies and investment communities and materialize the development and transfer of technology through concrete benefits.
- d. Showcase research that has commercial potential.
- e. Develop and train highly qualified workforce.

### 2. Eligibility of projects

Initiatives to support the development of scientific research are eligible:

- structuring research and innovation projects or activities aimed at resolving strategic issues for Québec, i.e., issues whose research field is important for Québec;
- projects aimed at encouraging the creation, development or consolidation of research and innovation partnerships or networks bringing together universities, colleges, institutions and industries;
- projects that facilitate the valorization of public research expertise and results.

Projects must meet the following condition:

- the organization must ensure that the researcher(s) involved in the project hold, when required, the rights to use the intellectual property needed to carry out the project.

Projects are not eligible if their main purpose is to:

- support an organization's operations;
- subcontracts for technical, economic and commercial feasibility studies, in particular for the construction/renovation of a building;

---

<sup>1</sup> The list of recognized eligible public research centers is available at the [following link](#).

- commercial and economic activities, such as product marketing, subcontracting for market research, or the acquisition, sale or construction of real estate.

This call for projects includes two types of funding requests that differ according to the size of the company:

- **SME COMPONENT:** Application for funding for a collaborative project with at least one SME, less than 250 employees (world total, including related companies) established in Québec and carrying out internal production or R&D activities there, as well as at least one university or a CCTT or a public research centre (See point 4 for the definition of SME).
- **LC COMPONENT:** Application for funding for a collaborative project with at least one LARGE COMPANY (LC), established in Québec and carrying out internal production or R&D activities there, as well as at least one university, a CCTT or a public research centre.

Projects submitted must clearly present the benefits of the projects for research, training and economic development.

It is strongly encouraged to contact PRIMA advisor to review the application before submission

### 3. Recommended Themes

In keeping with its strategic plan, PRIMA Québec recommends the submission of projects dealing with the development of advanced materials applied to key sectors in Québec like transportation and infrastructure, energy, environment, electronics, health, chemistry and critical and strategic minerals.

Technologies targeted by this project call include primarily:

- **New materials:** Polymers, elastomers, biomaterials, metals, innovative fillers, cellulosic filaments, natural and synthetic fibers, nanomaterials, quantum material, etc.
- **Formulated materials or high-performance finished or semi-finished products:** Composites (TD or TP), rubbers, alloys, ceramics, smart textiles, flexible materials, membranes, thin layers, coatings, biocompatible materials, encapsulation, sensors, quantum technologies, etc.
- **Implementation processes, scaling and new characterization techniques:** Additive manufacturing and 3D printing, modification and surface treatment, micro/nanofabrication, tools, new characterization tools, modelling and simulation, shaping processes, quantum calculus, etc.
- **Use of artificial intelligence** with advanced materials for production, integration or implementation processes or characterization technique.
- Innovations in **quantum technologies** for: quantum computing, quantum communication, quantum materials, quantum metrology and detection. Proposed projects should contribute to the development and commercialization of: quantum computing and quantum communication components; quantum technologies for applications in life sciences, sustainable development, transport and logistics.

If you are in any doubt as to whether your project is eligible, please contact a PRIMA advisor.

#### 4. Cross-cutting theme – Circular Economy

The 2035 roadmap initiated by PRIMA Québec aims to mobilize the advanced materials ecosystem to meet several major societal challenges related to the energy transition and decarbonization, the digital transition and securing supply chains. To this end, 7 orientations have been set out and several objectives (or recommendations for orientation 7) arise from them.

Among them, orientation 1 aims to increase the circularity of advanced materials within supply chains. In this context, PRIMA Québec has committed to integrating, as of 2025, the notion of circular economy as an evaluation criterion in its calls for projects.

To be in line with the objective of the roadmap, for a project submission to PRIMA Québec, it is recommended that one of the project objectives concerns the circular economy. See Appendix C of the guide for the definition of circular economy. This aspect will become mandatory in the R31 call for projects. Obviously for certain projects, for example in health, quantum, instrumentation, the link with the circular economy would be difficult, exceptions could be requested from PRIMA. This must be requested when the letter of intent is submitted.

#### 5. Participants

##### Eligible Candidates

Applications must be submitted by Québec research establishments. Universities, CCTTs or public research centres are eligible (if the research centre is not on the list, please contact PRIMA advisor to check the status [public or private] with the MEIE). They must allow the training of highly qualified personnel (HQP: students, postdocs, research staff or technicians).

##### Eligible Companies

- It is necessary to have at least one company with a presence in Québec. Investment funds are not considered an eligible company. It is necessary that the company be an active participant and be able to implement the benefits of the project. **The company must have research and development and/or production activities** to meet the objectives of the program which aims to strengthen the innovation capacity of companies through the valorization and technology transfer resulting from research projects.
- Companies must provide a **copy of their francization certificate**.  
A company or organization is subject if it has had 50 or more employees for more than 6 months. As of June 1, 2025, a business is subject if it has had 25 or more employees for more than 6 months. Cégeps and universities (except private colleges) do not have to provide proof of compliance with the francization requirements. If companies do not yet hold this

certificate, one of the following valid documents issued by the Office québécois de la langue française (OQLF) will be accepted:

- an attestation of registration with the OQLF;
- an acknowledgement of receipt of the linguistic situation analysis;
- attestation of program application

If a company finds itself at the [following address](#), it does not comply with the francization process and is therefore ineligible for the program.

- Companies doing business in Québec (Québec companies, companies with a place of business in Québec), who already have a website, must have their website in French. Partners outside Québec do not have this obligation.
- Foreign and Canadian companies are admitted as second (or third, etc.) industrial partners.
- **Related companies will be considered as one and the same company in the project.** Related meaning that “the relationship between the companies would be such that one has the ability to exercise, directly or indirectly, control or significant influence over decisions relating to the financing or operation of the other.”
- **Hydro-Québec** is considered, by default, as a public research center. However, the latter can be considered as an eligible company under certain conditions, see **appendix A** for details.
- Foundations and NPOs may be eligible as a 2nd tier company. However, they must be a **willing participant**: it must have the capacity and bring their expertise to the project and benefit from the direct benefits of the project.
- Startups are eligible; however, the MEIE may request additional information to ensure the company’s involvement in the project and its R&D, production capacities and be able to implement the benefits of the project.

**To be eligible as an SME, companies must meet the following characteristics:**

- Be legally incorporated under current federal or Québec laws and registered with the Registraire des entreprises du Québec;
- Have 250 employees or fewer in Québec;
- Not be owned, in a proportion of 50% or more, by other existing businesses or organizations;
- Have an establishment in operation in Québec intended for the production of goods and services or for internal research and development activities;
- Own the rights to use the intellectual property of their product, process or service;
- Their assets (including the assets of associated companies), calculated on a worldwide basis, for their taxation year ending in the calendar year preceding the given calendar year are less than \$50 million.

### Ineligible Candidates

Applicants who are in one or more of the following situations are not eligible:

- are registered, provisionally or definitively, in the Registre des entreprises non admissibles aux contrats publics (RENA). This situation also applies to subcontractors registered with RENA who are expected to carry out work on the project;
- are registered on the list of companies not compliant with the Francization Process, published on the website of the Office québécois de la langue française;
- have failed to meet their obligations during the two years preceding the application for financial assistance, after having been duly served with formal notice in connection with the granting of previous financial assistance by a department or agency of the Gouvernement du Québec
- are Crown corporations or corporations controlled directly or indirectly by a government (provincial or federal) or businesses that are majority-owned by a Crown corporation;
- are under the protection of the Companies' Creditors Arrangement Act (R.S.C. [1985], c. C-36) or the Bankruptcy and Insolvency Act (R.S.C. [1985], c. B-3);
- have their principal area of business relating to the following:
  - the production or distribution of weapons<sup>2</sup>;
  - the exploration, extraction, drilling, production and refining related to fossil fuels, such as oil and thermal coal, with the exception of activities aimed at a transition to a low-carbon economy;
  - the operation of games of chance and gambling, for example casinos, bingo halls, gaming terminals;
  - the exploitation of violent games, combat sports involving all living species, racing or other similar activities;
  - sexual exploitation, for example an erotic bar, an escort agency, an erotic massage parlour or a swingers club, the production of pornographic material;
  - the production, sale and services related to the consumption of tobacco or drugs, with the exception of interventions related to cannabis and industrial hemp presented in section 4.1.3 of the 2024-2027 [regulatory framework](#) for the MEIE PSO;

Financial assistance cannot be used to make a payment to any entity in any of the situations described above.

The Ministry reserves the right to refuse to grant financial assistance or to cease payment of financial assistance if the applicant or beneficiary does not meet the high standards of integrity that the public has reason to expect from a beneficiary of financial assistance paid from public funds.

---

<sup>2</sup> For the purposes of implementing the program, a weapon is defined as a product covered in sections 2-1, 2-2, 2-3, 2-4, 2-7, 2-8, 2-12 and 2-19 of the Guide to Canada's Export Control List (online, 2022-02-09).

**PRIMA Québec Membership**

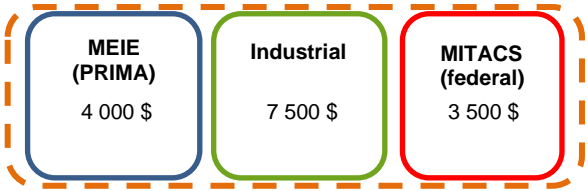
All industrial and academic organizations or public research centres participating in a project **are required to be members of PRIMA Québec at the time the project is submitted** and must remain members throughout the duration of the project. To become a member of PRIMA Québec: <https://www.prima.ca/en/product/prima-quebec-membership/>

0-50 employees	280 CAD
51-249 employees	450 CAD
250-499 employees	650 CAD
500 employees and (+)	1 000 CAD
Universities	2 000 CAD
CCTT – Public Laboratory	1 000 CAD
Partners	380 CAD



**6. Financing Program Standards**

Component	SME Component SME is a company with less than 250 employees.	Large Company Component (LC)
<u>Minimum</u> number of industrial partners	<p><b>1 SME minimum</b> less than 250 employees (world total, including related companies) with a place of business and R&amp;D or production activities in Québec.</p> <p>If the SME participates with a LC, the SME must demonstrate significant participation in the project:</p> <ul style="list-style-type: none"> <li>- Assessment of the company's position, its competition in the market and the ecosystem.</li> <li>- SME scientific and economic contribution level. It is important to clearly demonstrate the SME contributions to the project. (SME role in the project? What % does it contribute? Contribution in cash vs. business income? Does it make an in-kind contribution?)</li> <li>- Benefits of the project for the SME</li> <li>- Benefits for the other companies involved</li> <li>- Benefits for the sector of activity and for Québec.</li> <li>- etc.</li> </ul>	<p><b>1 LC minimum</b> having a place of business and R&amp;D or production activities in Québec</p>
Eligibility of industrial partners from outside Québec	<p style="text-align: center;">Yes, as a 2<sup>nd</sup> company It cannot be related to the first company</p>	
<u>Minimum</u> number of Québec academic partners (university or CCTT or public research centres)	<p style="text-align: center;">1</p>	
PRIMA Québec financing maximum, in %, of eligible R&D costs	<p style="text-align: center;">40%</p>	<p style="text-align: center;">20%</p>
<p style="text-align: center;">Max \$1.5M (\$500k/year)</p>		
Minimum industrial financing	<p style="text-align: center;"><b>Min 20% in cash</b></p> <p>-If one or several SMEs with LC, the total contribution of Québec SMEs must represent <b>at least 20% of the minimum private</b> contribution required.</p>	<p style="text-align: center;"><b>Min 40% in cash and in-kind</b> <b>50% of which may be in kind</b></p>
<p>The contribution of a company that has been paid to it as part of a government grant for this project will not be considered as an industrial contribution, but as additional financing. <u>Only new industrial contributions for new projects will be recognized as counterparty</u>, i.e., the MEIE aid will be granted in return for new industrial contributions (not already committed as co-financing in other programs or projects).</p>		
Maximum cumulative public financing	<p style="text-align: center;">80%</p>	<p style="text-align: center;">60%</p>

Component	SME Component SME is a company with less than 250 employees.	Large Company Component (LC)
Complementary funding encouraged	<p>NSERC<sup>3</sup>, NRC-IRAP, MITACS, SDTC, IRSST and other municipal, provincial or federal funding sources. Any additional funding must be added to the PRIMA request (thematic and budget) once the additional funding has been deposited. Contact a PRIMA advisor to confirm acceptability and terms. For the use of MITACS and other public funding obtained by the company, you must contact a PRIMA advisor.</p> <p><b>Complementary funding should be obtained within 9 months</b> of the evaluation date to avoid the scientific and economic evaluation being called into question. <b>It is recommended to send the request for complementary funding before or shortly after submission to PRIMA</b> to avoid any delay (&gt; 1 year) that could lead to a rejection of the final approval of the project by the MEIE following a recommendation of the project by the jury.</p> <p>Ineligible additional funding:</p> <ul style="list-style-type: none"> <li>• MEIE grant cannot be combined with financial assistance from another program of the Ministère de l'Économie, de l'Innovation et de l'Énergie including those of the Fonds du développement économique (FDE), nor a contribution already matched by the MEIE</li> <li>• Cannot be funding already committed for research activities distinct from those that are the subject of the application to PRIMA.</li> </ul> <p>It is necessary to <u>specify in the request for additional funding that an application to PRIMA has been submitted</u> and the supplementary financing budget must include funding from PRIMA<sup>4</sup>.</p> <p><u>Complementary funding already obtained that does not specify PRIMA Québec and the current project cannot be used.</u></p> <p><u>If a request for additional funding is made to NSERC with co-applicants outside Québec, it will be necessary to contact an advisor, because the financial arrangement will change. For PRIMA's contribution, only students from Québec institutions are considered in the financial calculation.</u></p> <p><u>MITACS grant cannot exceed 50% of the research budget and must be divided into its components.</u></p> <ul style="list-style-type: none"> <li>• The provincial part (MEIE) comes under PRIMA funding,</li> <li>• The industrial part under industrial financing,</li> <li>• The federal part under complementary funding</li> </ul> <p><b>The scientific evaluation of PRIMA serves as a scientific evaluation for MITACS internships. It is mandatory to quickly contact your PRIMA and Mitacs advisor to ensure the coordination of the PRIMA form and the Mitacs appendix.</b></p> <p>Division of a MITACS internship unit (15 000\$)</p> <div style="text-align: center;">  <p>MEIE (PRIMA) 4 000 \$</p> <p>Industrial 7 500 \$</p> <p>MITACS (federal) 3 500 \$</p> <p>3 years</p> </div>	
Maximum duration of projects	<p>The project can begin, at the earliest upon confirmation of the complete eligibility of the project following its submission, and at the latest 9 months after the approval of financing by the MEIE.</p> <p>The starting date of the project will be the date of the first expenditure on the project.</p>	

<sup>3</sup> In the Alliance grant, please specify PRIMA as “Other funders (who does not participate in the research)” and specify Michel Lefèvre, michel.lefevre@prima.ca as PRIMA resource person.

<sup>4</sup> A copy of the request for additional funding must be sent to PRIMA.

Component	SME Component SME is a company with less than 250 employees.	Large Company Component (LC)
Indirect research costs (only for universities and CCTT)	27% of the MEIE contribution on eligible expenses	
PRIMA Québec management fees	4% of R&D budget Max \$50,000 Split between the MEIE (1.6%) and the industrial (2.4%)	2% of R&D budget Max \$50,000 Split between the MEIE (0.4%) and the industrial (1.6%)

**Example of funding**

SME Component		
Contributions	\$	%
Industrial Partners (Cash)	20,000	Min. 20
<b>PRIMA Québec</b>	<b>40 000</b>	<b>Max. 40</b>
Additional public funding	40,000	40
<b>TOTAL R&amp;D BUDGET</b>	<b>100 000</b>	<b>100</b>

**Large Company Component**

Contributions	\$	%
Industrial Partners	40,000	Min. 40
Cash	(20,000)	50% of which may be in kind
In-Kind	(20,000)	
<b>PRIMA Québec</b>	<b>20 000</b>	<b>Max. 20</b>
Additional public funding	40,000	40
<b>TOTAL R&amp;D BUDGET</b>	<b>100,000</b>	<b>100</b>

**Please contact PRIMA Quebec advisor to check your budget and avoid problems when submitting.**

**Technology Readiness Level (TRL)**

To properly assess the project submitted to PRIMA, the applicant must identify the TRL level of the technological solution at the start of the project and that targeted at the end of the latter. The TRL level is no longer used to calculate the grant but is used to weight the evaluation. Projects can range from TRL 1 to 9. However, the PRIMA program is a grant for the support of Research and Development projects, if we find that the share of R and D is low or that another program would be better suited, the project will be declared ineligible.

**7. Financing Program Standards**

Projects are cost-shared between industry, MEIE and complementary funding. **MEIE support is for the entire project**, not just a portion of the project's research activities. Any cost overruns on the project as initially presented to PRIMA must be assumed by the promoter.

**Eligible Expenses**

Eligible expenses are the direct costs of projects (research mandate) incurred in public research institutions in Québec.

Indirect project costs refer to additional operating expenses arising from research projects, but which cannot be specifically attributed to them. They include costs related to the operation and maintenance of infrastructure, the management and administration of projects, as well as compliance with the various regulations and standards in force.

Eligible expenses must be incurred after confirmation of the eligibility of the complete application submitted to PRIMA. Expenditures incurred by the applicant before the application passes assessment by PRIMA are authorized by the MEIE but are incurred at the applicant's risk.

After the completion of the project, if the actual eligible expenses are lower than forecast, PRIMA will carry out a downward revision of the amount of the subsidy that had been announced, based on the percentage of the contribution determined when the grant was announced and based on the expenses actually incurred.

Any cost overrun for the project as initially presented to PRIMA must be assumed by the beneficiary.

### **List of eligible expenses:**

1. Salaries, wages and benefits that are not the subject of any other public financial support (students, postdoctoral fellows, assistants and research professionals, technicians, etc.)
  - Amounts relating to the release of university professors to carry out activities within the framework of projects cannot appear in this expenditure item, unless the establishment confirms by letter the actual cost of the period of release of the researcher from his usual responsibilities.
  - Salaries including benefits of professors newly recruited by an academic institution based on recognized expertise can be covered for a maximum period of three years, as long as they are part of a research chair dedicated to answering the needs of an emerging industry in Québec. These chairs also ensure the generation of highly qualified personnel to integrate into the workforce in these key industrial sectors.
  - It is the actual cost and not selling price that must be indicated.
2. Scholarships
3. Materials, consumables and supplies
  - Consumables cannot be the object of commercial transactions between stakeholders (for example, purchased from one of the industrial partners)
4. Purchase and/or rental of equipment
  - Purchase: less \$25k per equipment before tax otherwise must be rented
  - Put only the cost of renting the equipment, does not include the final amount to purchase the equipment.
  - The purchase and rental of equipment represent a maximum of 25% of the total eligible expenses.
5. Travel and accommodation expenses
  - Calculated according to the Ministry [guideline](#), these must be reasonable
  - For international projects, travel and accommodation expenses for Québec researchers and students are eligible, but may not exceed 15% of total eligible expenses.
  - Travel and living expenses for foreign researchers are not considered eligible.
  - Translation and design costs for legal documents to consolidate partnerships may be eligible (maximum \$10,000).
6. Others:
  - 6.1 Animal and platform costs
  - 6.2 Costs related to subcontracting contracts
    - Subcontractors must be mentioned and must not be registered in the register of companies not eligible for public contracts ([RENA](#)).

- Subcontractors must be systematically listed in the application form. If the subcontractor is not known, please mention possible subcontractors.

### 6.3 Professional fees

- External services must be justified and represent a small portion of the budget.

### 6.4 Knowledge dissemination costs

- Please mention conferences and their relevance to the project.

### 6.5 Monetary compensation for participation in projects

### 6.6 Prototype

### 6.7 Intellectual property management fees

Please note that the portion of non-refundable taxes may be included in the amount of eligible expenses.

PRIMA Québec management fees are an eligible expense calculated outside the R&D budget. They must be paid by the industrialist or any other private source.

### **Ineligible expenses**

1. Expenditures made prior to the project start date as specified in the agreement. The start date may be, at the earliest, the date of confirmation of project eligibility;
2. Sums related to the release of university professors to carry out activities within the framework of the projects cannot be included in this item of expenditure;
3. Salaries of university researchers who are currently being paid by their institution or by a government granting agency are not eligible expenses;
4. Administrative costs are not eligible;
5. Equipment maintenance costs;
6. Expenses for filing and maintaining intellectual property;
7. Recurring costs such as annual subscription fees and software upgrade fees;
8. Expenses that have already received financial assistance from the Ministry or any other Québec government program funded by the FECC;
9. Refundable federal and provincial taxes;
10. Land acquisition expenses;
11. Building acquisition, construction or expansion expenses.
12. Depreciation expenses

### **In-kind contribution**

For collaborative projects with an SME, the partners in-kind contributions are not considered in the calculation of the grant. However, the jury will take it into account to assess the significant participation of the SME in the project.

For LARGE COMPANY projects, in-kind contributions from partners are also accepted if:

- These are expenses subject to an audit by the MEI (their value can be reasonably established and supported by supporting documents);
- They are essential to the realization of the selected project;
- They correspond to costs incurred specifically to carry out the project;

- They represent an item that would otherwise have to be paid for at equal or higher cost;
- Only 50% of the total industrial contribution (cash + in-kind) is considered, there may be more than 50% in the project.

### **Indirect Costs of Research (Universities, affiliated hospitals and CCTT)**

For all funded projects, PRIMA Québec will grant to the university, affiliated hospitals, colleges and CCTTs, in addition to the research grant, a subsidy for indirect costs of research for a maximum of 27% of the grant awarded by PRIMA Québec on the following items of expenditure:

- Salaries, wages and benefits
- Scholarships
- Materials, consumables and supplies
- Purchase or rental of equipment
- Travel and accommodation expenses

Note: The other financial contributors to the project must pay an indirect research expenses rate on their contribution at least equivalent to that of the MEIE for the project (27%). In other words, all the funders must pay the full costs of the research, notably by paying the indirect research expenses.

### **Management Costs**

PRIMA's management costs are shared between the manufacturers and the MEIE. It is the responsibility of the funding applicant to inform industrial partners of PRIMA Québec's management fees. The combined management fees of the MEIE and the industrialist are a maximum of \$50,000.

#### For SME component projects (4% of the project)

- Companies involved in the project must contribute to PRIMA Québec's management fees for a total amount of **2.4%** of the amount of the research mandate up to a maximum of \$30,000.
- MEIE management fees are 1.6% up to a maximum of \$20,000 max.

#### For GE component projects (2% of the project)

- Companies involved in the project must contribute to PRIMA Québec's management fees for a total amount of **1.6%** of the amount of the research mandate up to a maximum of \$40,000.
- MEIE management fees are 0.4% up to a maximum of \$10,000.

## **8. Various**

### **Intellectual Property Management**

An agreement governing conditions for the management of intellectual property must be concluded among all partners (companies, universities, research centres) before financing is awarded.

Application files will be accepted for evaluation even if an intellectual property agreement is not available at the time the proposal is submitted. Nonetheless, **the application file must present a broad outline of the sharing of intellectual property under consideration.**

### **Communications**

Please note that the information given in the identification sheet section as well as the amount of the grant is public data and can be used by the MEIE and PRIMA Québec for promotional purposes.

If your project is approved for funding, the ministry may reserve the right to a first communication. **Please communicate with PRIMA before any first communication** about the project.

**9. Procedure and Timetable**

1. Call launch on February 10, 2025
2. Webinar on March 5, at 10 a.m., link for registration:  
[https://us06web.zoom.us/webinar/register/WN\\_4t1W56JzQAi8cpuXd8jR5A](https://us06web.zoom.us/webinar/register/WN_4t1W56JzQAi8cpuXd8jR5A)
3. Letter of intent is mandatory **by noon on April 25, 2025**. If you are not already in contact with an advisor, an advisor will contact the project promoter to help set up the project and ensure that the project is in the right category. Transmission of documents or discussions with the company could take place as part of this validation.
4. Applicants must submit a COMPLETE APPLICATION before **noon on May 26, 2025**. It is necessary to include the following items with the completed PRIMA form:
  - The CVs of the main researchers and academic and industrial collaborators (no format is imposed). Note for industrial CVs, please avoid having personal information such as email or address.
  - Signed letters of support from all industrial partners specifying:
    - Why is this project necessary for them?
    - What will be the benefits for them?
    - Include the following table:

Company Name	Cash Contribution to the R&D budget		Management Fees Contribution	Contribution to the ICR requested by the academic partner (if applicable)	In-kind Contribution
	Excluding Mitacs	Mitacs (if applicable)			

- Companies must provide a copy of their francization certificate.  
A company or organization is subject if it has had 50 or more employees for more than 6 months. As of June 1<sup>st</sup>, 2025, a business is subject if it has had 25 or more employees for more than 6 months. Cégeps and universities (except private colleges) do not have to provide proof of compliance with the francization requirements.  
If companies do not yet have this certificate, one of the following valid documents issued by the Office québécois de la langue française (OQLF) is accepted: If companies do not yet hold this certificate, one of the following valid documents issued by the Office québécois de la langue française (OQLF) will be accepted:
  - an attestation of registration with the OQLF;
  - an acknowledgement of receipt of the linguistic situation analysis;
  - attestation of program application
 If a company finds itself at the [following address](#), it does not comply with the francization process and is therefore ineligible for the program.
- A PDF copy of the additional funding request must be sent to PRIMA Québec once it has been submitted.

- If applicable, the Mitacs joint application form with the RSRI if the promoter does not use the NSERC/MITACS joint program.
  - Have you informed industrial partners doing business in Québec (Québec companies, companies with a place of business in Québec) and who has a website that they must have their website in French? Partners outside Québec do not have this obligation.
  - Partners (industrial and academic) must be members of PRIMA Québec at the time of submitting your application.
5. Verification of project eligibility.
  6. Projects will be evaluated by a scientific and economic evaluation committee selected by FRQ Nature et technologies sector and IRAP-NRC (See section 7 for criteria).
  7. Results will be announced at the end of September 2025.
  8. Obtaining complementary funding. **This complementary funding should be obtained within 9 months after the evaluation date** to avoid any questioning of the scientific and economic evaluation. **It is necessary to send the request for complementary funding before or shortly after submission to PRIMA** to avoid any delay (> 1 year) that could lead to a rejection of the final approval of the project by the MEIE following a recommendation of the project by the jury.
  9. When complementary funding is obtained, the file is sent to the **MEIE for funding authorization**. Please note that any other documents may be requested by the MEIE to validate the project component, the sources of funding (private or public), the company's ability to participate in the project, especially for startups.
  10. **Once authorization has been obtained, the grant agreement between the project promoter and PRIMA Québec must be signed within 9 months.** The project can begin, at the earliest upon confirmation of the complete eligibility of the project following its submission, and at the latest 9 months after the approval of financing by the MEIE.
  11. During the project, proof of the industrial partner's contribution as well as technical and financial reports will be required as specified in the grant agreement.
  12. At the end of the project, final reports (technical and financial) from the promoter and assessment report completed by the companies present in the project will be requested.

### 10. Evaluation Criteria

For each of the SME and LARGE COMPANY components, the selection of applications will be made by an independent evaluation committee selected by the FRQ Nature et technologies sector for the scientific part and the IRAP-NRC for the economic part according to the following criteria and according to the weighting indicated:

#### TRL 1-3 Projects:

- A. Scientific component (70% of the overall mark)
  - Scientific quality and feasibility of the project (30%),
  - Training and knowledge transfer (30%),
  - Innovation and impact of the project in the medium term (40%).
- B. Economic relevance component (30% of the overall score)



- Relevance and adequacy between the project and the industry as well as the quality of the team (50% of the economic component),
- IP strategy and economic benefits for industry and Québec (50% of the economic component).

### TRL 4-9 Projects:

#### A. Scientific component (60% of the overall mark)

- Scientific quality and feasibility of the project (20%),
- Training and knowledge transfer (40%),
- Innovation and impact of the project in the medium term (40%).

#### B. Economic relevance component (40% of the overall score)

- Relevance and adequacy between the project and the industry as well as the quality of the team (50% of the economic component),
- IP strategy and economic benefits for industry and Québec (50% of the economic component).

To be eligible for funding, a project must obtain:

- A score above **70%** on the scientific component,
- A score higher than **50%** on the economic component,
- The overall score must be greater than **70%**.

The selection committee can approve the project, refuse it, or approve it conditionally to changes or clarifications required by the selection committee. A summary of the assessment will be sent to the proponent along with the conditional recommendations if applicable.

Following a positive evaluation, the project will be sent to the board of PRIMA Québec for recommendations for funding to the MEIE. However, **the MEIE reserves the right not to award the funding. It could prioritize projects based on the research benefits, the training of skilled workers, economic benefits and budget availability.** It could request additional documents or information from the promoter or companies participating in the project to finalize its decision.

The approval of the MEIE is also subject to obtaining complementary funding and an intellectual property agreement between the participants. **No project approval request is submitted to the MEIE before obtaining complementary funding.**

To avoid lengthening the time between the submission of the project and the funding agreement, please submit the additional funding request and PRIMA request at the same time.

This program is dependent on funding from the MEIE. No guarantee of obtaining the grant can be provided. The grant criteria and other terms and conditions of this funding program are subject to change without notice.

Please note that the decisions of the Evaluation Committee and PRIMA Québec Board of Directors are **final and without appeal**.

## 11. Project Application Form

This form is based on that of a CRSNG alliance grant dated December 2024, with the aim of facilitating joint applications to RSRI.

Sections	Number of pages based on the average annual amount requested from the RSRI		
	Suggested number of pages per section		
	Up to \$75,000 per year	From \$75,001 to \$300,000 per year	From \$300,001 to \$500,000 per year
<b>II. Context</b>	0.5	0.75	1
<b>III. Partnership</b>	1	2	5
<b>IV. Justification of the TRL level</b>	1	1	1
<b>V. Research plan</b>	1.5	4	11
<b>VI. Project management</b>	1	2	3
<b>VII. Team</b>	1	2	4
<b>VIII. Training plan</b>	2	2	4
<b>IX. Impact and benefits of the project</b>			
<b>IX.a Intellectual Property and technology transfer</b>	1	1	1
<b>IX.b Benefits for academic partner(s):</b>	1	1	1
<b>IX.d Benefits for Québec:</b>	1	1	1
	Maximum number of pages in sections II to IV except IX.c		
	11	17	32
<b>Not considered in the maximum limit of pages of the document</b>			
<b>I. Identification sheet</b>			
<b>IX.c Benefits for industrial partner(s)</b>	Max 2 pages per company	Max 2 pages per company	Max 2 pages per company
<b>Budget justification</b>	Unlimited, must be as specific as possible		
<b>Appendices</b>	Attach the Gantt chart, organization chart, budget, CVs and letters of support. Exceptionally, other information such as a diagram may be attached. It is mandatory to request authorization from PRIMA for this other information, otherwise it will be deleted before sending to the jury.		

### Section Descriptions

#### I. PROJECT IDENTIFICATION SHEET

- The name of the participants, the title of the project, the amount of the grant and the project as well as the summary are public information that can be used by PRIMA or the MEIE in communications.
- Application history, if you have previously applied for a grant from an RSRI call for projects for this or a similar project, please explain how this application differs from your previous application(s). If this section does not apply to you, please indicate, “Not Applicable”.

#### II. PROJECT CONTEXT

- Explain the problem to be solved. Stress the importance of the subject and the need to develop new concepts or directions.
- State the project's objectives and briefly explain the expected outcomes and results.
- Situate the proposed research in relation to other efforts and cutting-edge research in the field.

#### III. PARTNERSHIP

- List all partner organizations that will be involved in the project. For each partner organization, describe the core activities the organization will carry out, and how they fit into the project. Explain why the organization needs the proposed project, and describe its related experience, including its efforts to date to solve the problem.
- Describe the active role each partner organization will play in the project, e.g., formulating research questions, designing the research plan, collaborating on or contributing to research activities, co-supervising trainees and monitoring progress.
- Explain how the partner organizations will translate, exploit or apply the research results to achieve the desired outcomes.
- Explain the value and importance of each partner organization's participation and other in-kind contributions to the achievement of the expected results. If applicable, explain how the combination of partner organizations benefits the project.

#### IV. JUSTIFICATION OF TRL LEVEL

- Justify the starting TRL and ending TRL you are assigning to the project. The TRL level considered is in a Québec research context (see Appendix B).

#### V. RESEARCH PLAN

- Present the research objectives and expected results. Describe the research activities, methodology and experimental design.
- Describe how equity, diversity and inclusion are considered and integrated, as appropriate, into the research process (e.g., formulation of research questions, design of research plan, choice of methodology, analysis, and interpretation and dissemination of results). Note valid only for NSERC applications.

- If it is a 4 or 5-year project, the entire duration of the project must be described to ensure proper evaluation, even if only years 1-3 are funded by MEIE via this proposal.

### VI. PROJECT MANAGEMENT

Present the project activities in the form of an explicit GANTT chart (place the diagram in the application appendix), with Go/NoGo milestones. Also, indicate parts related to MITACS internships if applicable.

- Describe each activity with mitigating methods in case of NoGo.
- If NSERC is for a 4 or 5-year project, include years 4-5 in the GANTT chart.
- Add an organization chart of the research consortium (large-scale, multi-partner projects) as an appendix.

### VII. TEAM

- Indicate the name of the candidate and co-candidates (if applicable), as well as key personnel from partner organizations and other key personnel from post-secondary institutions who will be involved in the project. Explain how the knowledge, expertise, experience and contributions of each of these individuals fit into the proposed project, and describe their role in this context, as well as their capacity to train and mentor trainees.
- Briefly describe the project management plan and the qualifications, roles and responsibilities of the team members who will participate in its implementation.
- Add as an appendix the CVs (can be in synthetic format with a summary of relevant experience) of the academics and staff of the companies participating in the project. Remove personal information from CVs, such as email, address, phone number.
- In the case of an SME project in collaboration with one or more GEs, clearly specify the involvement of the SME in the project. This is part of the assessment of the SME's significant involvement in the project.

### VIII. TRAINING PLAN

- Explain the learning experiences that the project will provide, including the nature of interactions between trainees (1st, 2nd and 3rd cycle students as well as postdoctoral trainees) and partner organizations.
- Indicate the research and professional skills that trainees will acquire through these experiences and the role they will play in the project.
- Explain how the research and professional skills acquired by the trainees will prepare them for their future careers.
- Describe the equity, diversity and inclusion issues presented by the project's training environment, and the concrete practices you will implement to address them. NSERC invites you to provide evidence to support the proposed practices, and to explain how you will monitor non-demographic indicators of success and adjust measures accordingly. Note: valid only for NSERC applications.

### IX. PROJECT IMPACTS AND BENEFITS

#### a. Intellectual Property and Technology Transfer:

- Please indicate the strategy for sharing anticipated IP and background IP to manage, protect and enhance the value of intellectual property resulting from the project for all partners, and how the industrial benefits.
- Describe the transfer to industry

#### b. Benefits for academic partner(s):

- Training of HQP, valorization of knowledge (transfer, publications, intellectual property, etc.), technological developments (new products, processes, standards, methods, etc.), scientific expertise (acquisition, development or consolidation), use of infrastructures.

#### c. Benefits for industrial partner(s) (Write in collaboration with the industrial partner, be as quantitative as possible):

**Be as explanatory and quantitative as possible**, this section is important in the committee's evaluation and for the MEIE's final decision on financing the project.

#### Company 1:

1. Target number of jobs created or maintained
  - Indicate the type and number (full-time, part-time, temporary) as well as the justification.
2. Valorization of knowledge
  - Indicate the type and number (knowledge transfer, patent, improvement of know-how, others) as well as the justification
3. Business potential
  - Will this project strengthen your current market or lead you into new markets? Specify the region of your current market or the new markets targeted?
  - For each, indicate the number of products, processes or technologies that the project will create or improve, and the justification.
4. What are the business risks and how are they mitigated?
5. Other spinoffs (if applicable)

#### d. Spinoffs and benefits for Québec:

- Indicate the benefits for Québec for the environment, social economic, impact on the sector of activity, others and justify

### X. FINANCIAL ASPECT

Fill in the Excel file and provide detailed justification of expenses and contributions (industrial and complementary).

In the financial budget, industrial contributions are direct R&D contributions. This excludes amounts such as ICRs that universities and CCTTs may request and PRIMA management fees.

For the justification of the prototype line of the budget, please show that you have the necessary expertise and that the costs are realistic for the realization of the prototype, and that if authorizations are required, these have been obtained or are in the process of being obtained.

## Remarks

- **Feel free to send the completed application form to an advisor for verification before submission.**
- We encourage you to submit your application for PRIMA and additional funding in the same period to avoid extending the time before funding approval.
- If you are using Mitacs funding, please contact your PRIMA and Mitacs advisor to ensure funding rules are followed and forms completed correctly.
- Make sure you have all the expertise needed to carry out the project.
- In the intellectual property section even if an agreement is not yet signed at the time of filing, please clearly state the outline on which the negotiation is taking place or will take place.
- This program aims, among other things, to train highly qualified personnel and to generate economic benefits for companies and for Québec. Please make sure that your application clearly presents these aspects.

## 12. Contacts

For further information or assistance in the drafting of the application file, do not hesitate to contact an advisor:

- Michel Lefèvre: 514 241-3322, [michel.lefevre@prima.ca](mailto:michel.lefevre@prima.ca)
- Sébastien Garbarino: 438 504-6068, [sebastien.garbarino@prima.ca](mailto:sebastien.garbarino@prima.ca)
- Cloé Bouchard-Aubin: 514 632-2429, [cloe.bouchard-aubin@prima.ca](mailto:cloe.bouchard-aubin@prima.ca)
- Rusoma Akilimali: 438 401-9821, [rusoma.akilimali@prima.ca](mailto:rusoma.akilimali@prima.ca)
- Mélanie Girard: 263 362-7490, [melanie.girard@prima.ca](mailto:melanie.girard@prima.ca)

Applications must be sent as a **single file in PDF format** (Adobe Acrobat) by email to: [lydie.chauvire@prima.ca](mailto:lydie.chauvire@prima.ca), 514 834-2052.

### APPENDIX A: HYDRO-QUÉBEC

Hydro-Québec is considered by default to be a public research center.

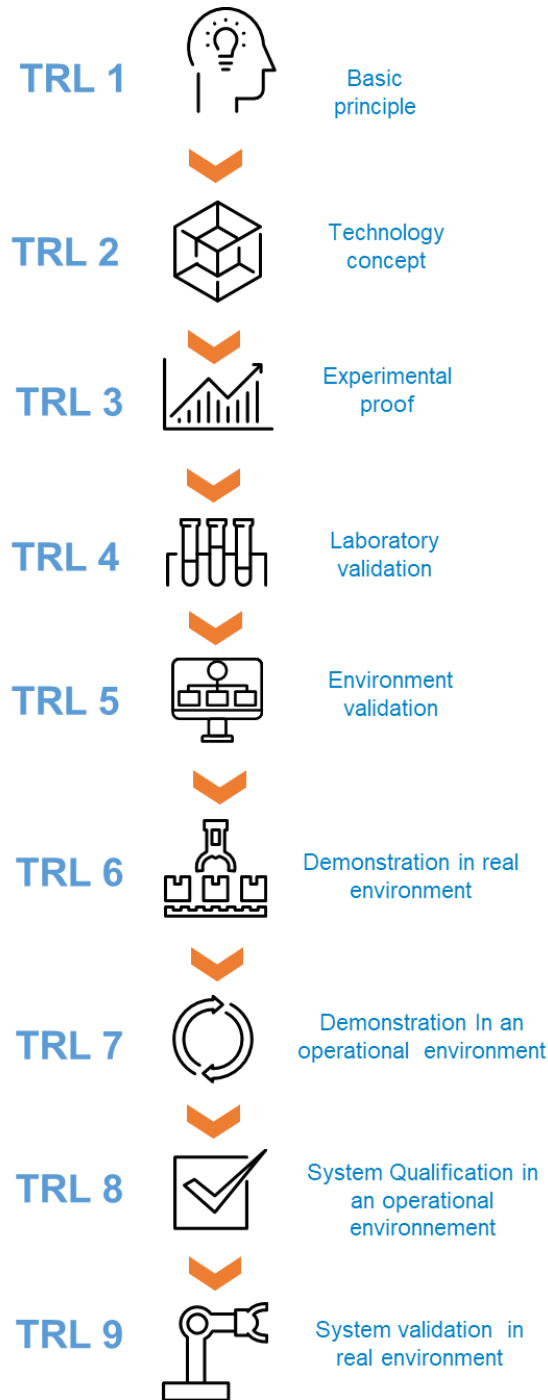
However, Hydro-Québec plays an extremely structuring role in the innovation ecosystem in electricity production and distribution, a sector where it is a major client in the context of monopoly. Because of this unique situation, the MEIE authorizes Hydro-Québec to be considered as an industrial partner in research projects in partnership with InnovÉÉ, PRIMA and PROMPT if the following criteria are met.

1. Themes:
  - Field of production, transport and distribution of electricity.
  
2. Partnership:
  - At least one Québec company other than Hydro-Québec must be involved in the project.
  - The Québec company must derive significant benefits from the partnership, notably an equitable sharing of the IP.
  
3. Structuring and strategic nature of the projects:
  - To be eligible, projects involving Hydro-Québec must be “structuring” and aim at “solving problems of a strategic nature for Québec”. In this sense, projects where benefits will allow above all the continuous improvement of Hydro-Québec’s operations are not eligible.

These project eligibility criteria must be analyzed by the evaluation committee and appear in the report submitted to MEIE.

Apart from this exception, all other PSov2b standards must be respected.

## APPENDIX B: DEFINITION OF DIFFERENT TECHNOLOGY READINESS LEVELS (TRL)



Graphic inspired by the document: Space Systems - Definition of Technology Readiness Levels (TRL) and their criteria of assessment, ISO 16,290. (<https://www.iso.org/fr/standard/56064.html>)

The ISO16290 standard is available for consultation at the offices of PRIMA Québec.

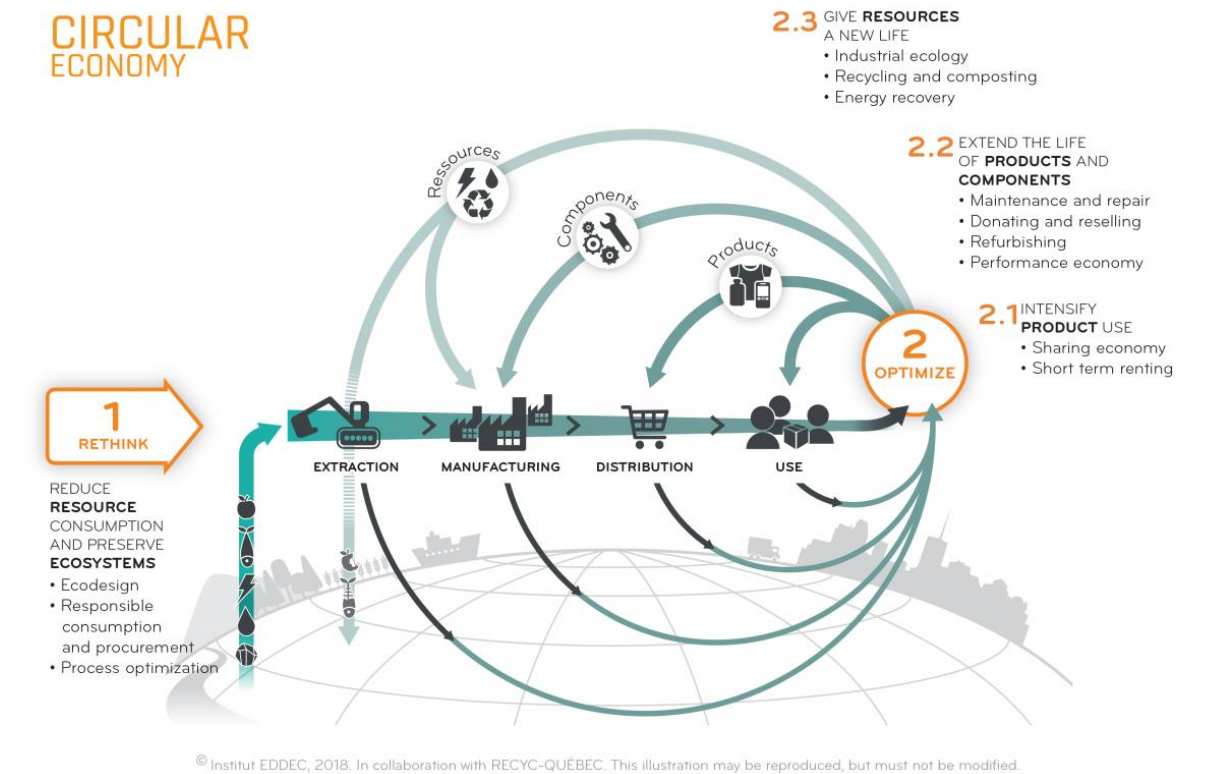


**APPENDIX C: CIRCULAR ECONOMY**

For a submission to PRIMA Québec, it is recommended that the R&D project fits in with at least one of the objectives related to the circular economy. If your project does not fit into one of the 12 strategies, contact PRIMA when you submit your letter of intent to request an exemption.

Please note that for this R30 call, this aspect is not evaluated but will be for future calls.

Figure 1 - Representation of the circular economy



The circular economy proposes 12 circularity strategies<sup>5</sup>.

Objectives	Strategies	Definitions
Reduce resource consumption and preserve ecosystems	<b>1. Ecodesign</b>	Integration of environmental aspects right from the design stage of products and services to minimize impacts throughout their life cycle
	<b>2. Responsible consumption and procurement</b>	Integrating sustainable development and social responsibility into the purchasing or acquisition of goods and services by consumers or private and public organizations
	<b>3. Process optimization</b>	Improvement of each of the organization’s processes by seeking to reduce the consumption of raw materials, energy, water and waste

<sup>5</sup>Source : Recyc-Québec, <https://www.recyc-quebec.gouv.qc.ca/entreprises-organismes/mieux-gerer/economie-circulaire/>

Intensify product use	<b>4. Sharing economy</b>	A set of exchanges between users based on shared use, collaborative production and barter. Favored are the temporary pooling of resources or the definitive redistribution of goods with or without compensation.
	<b>5. Short term renting</b>	Use of goods or services within a defined framework in return for remuneration
Extend the life of products and components	<b>6. Maintenance and repair</b>	Action of maintaining an object in good condition in order to extend its useful life
	<b>7. Donating and reselling</b>	Putting used goods back into circulation by donating or selling them to a third party
	<b>8. Refurbishing</b>	Refurbishing an object with the aim of reselling it
	<b>9. Performance economy</b>	Business model of a company that favors the sale of the use of the product rather than the sale of the product itself. We then focus on usage performance. Users buy the feature, not the product.
Give resources a new life	<b>10. Industrial ecology</b>	Network of companies and communities linked together by exchanges of materials (e.g., by-products), water or energy. These exchanges form synergies. The waste of one becomes the raw material of the other. The terms “symbiosis” or “industrial symbiosis” are often used.
	<b>11. Recycling and composting</b>	Recycling is the use, in a manufacturing process, of a recovered material to replace a virgin material. Composting is a biological treatment process which allows the biodegradation of organic materials under the action of aerobic microorganisms.
	<b>12. Energy recovery</b>	Any operation which does not constitute elimination and which aims to obtain, from residual materials, useful products or energy